





Security Management Solution ***For Wireless Network***

 11205 Knott Avenue, Suite A, Cypress, CA90630

 +1 (714) 230-8333

 www.btiwireless.com

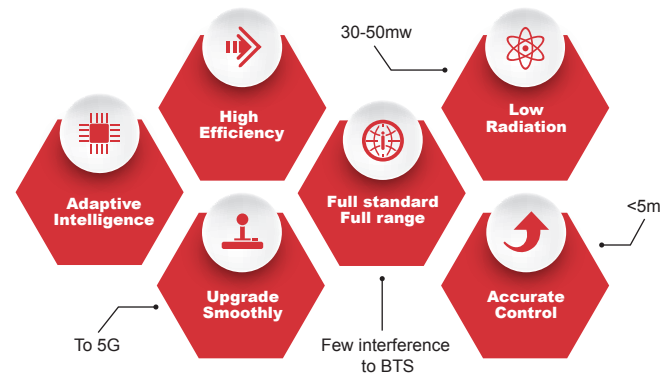
 sales@btiwireless.com



Wireless Security Product Family

BTI Wireless' wireless security product solutions are ideal where reliable security is required such as public safety activities, secured meetings and facilities, special events and incidents. Innovative security product solutions offering include managed services as well as total blocking capabilities from desktop to large complexes and venues.

- **Multi-Scenarios**
Prison / Public safety / Office / Confidential Meeting
- **Diversified Design**
Desktop Interrupter / Distributed Antenna System / Portability
- **Exclusive Service and Solutions**
Customized Service / Innovative Technology / Monitoring Platform



Intelligent blocking feature

- Innovation in signaling level control, distributed multi-point launching
- Low power, low radiation, energy saving
- Power adjustable, accurate perimeter control
- Full standard, full region, no blind spots
- Remote maintenance platform
- Self-adapting, smooth upgrade

CUBE 2.0



Description:

CUBE's wireless signal interruption design incorporates the latest technology and innovation:

- **Multiple band**
Supporting full global band,
2G / 3G / 4G / 5G / Wi-Fi / Bluetooth
- **Non-Interference**
Signaling downlink blocking technology,
no interference on uplink
- **Lower radiation**
Energy saving, self adapting live network

Application:

meeting room, prison, office

Range	100-200 m ²
Frequency Range	Full standard (2G, 3G, 4G, 5G, Wi-Fi)
Launching mode	Built in antenna
Output power	2W
Effective Distance	150m ² @RSRP≤-85dBm
Installation	Wall mount or stand

Wi-Fi Interrupter



Description:

The device only interrupt WiFi signal,
it is plug and play easy to deploy.

Application:

office, meeting room

Output Port	Frequency Band	Output Watt
CH1	2400-2485MHz	2Watt
CH2	5160-5340MHz	2Watt
CH3	5725-5850MHz	2Watt
Output Power	6W	
Power Consumption	75W	
Installation	Stand	

Full Band Interrupter



Description:

A fully-integrated broadband signal interruption system. Ideal for defending VIP convoys and large targeted areas.

Application:

military base, secured events, international summits

Frequency Range	20-6000MHz, can also be customized
Total RF Power	480Watt
Jammer Module Number	6
No. of Bands	Max: 24Bands
Number of Antennas	6

Anti-UAV Defence



Description:

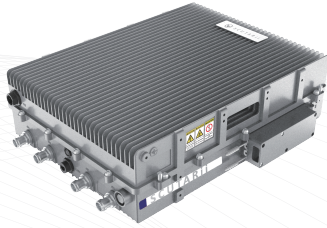
Portable Anti-UAV Interrupter, aimed at disrupting control of unauthorized flying UAV by intercepting communications between remote controller and UAV.

Application:

military base, enforcement zone

Frequency	800M900M、1.2GHz、1.4GHz、1.5GHz 2.4GHz、5.1GHz、5.4GHz、5.8GHz
Intercept response time	≤5s
Effective Distance	3km-4km
Coverage	360° Air Space

Managed Access System (MAS) Series



▪ SU - Signaling Unit

SU detect and receive public mobile network signal to feed the Access Unit



▪ RU - Remote Unit

Remote Unit converts from digital to RF signal



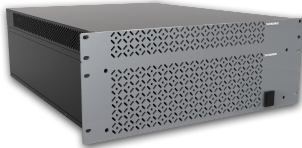
▪ AU - Access Unit

Access Unit converts Analogue RF signal source to digital signals over fiber.



▪ EU - Expansion Unit

Expansion Unit is required to extend larger number of Remote Units



▪ ICU – IMSI Catching Unit

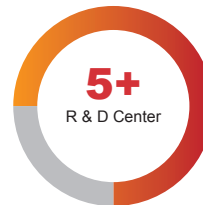
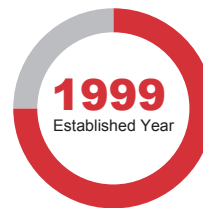
IMSI Catching Unit can detect devices within the coverage area and log and report IMSIs.

ABOUT US

BTI Wireless was founded in the United States in 1999 and rapidly built a global reputation as the world-leader in power amplifier technology, having supplied to major global RAN and DAS vendors as OEM since 2001.

BTI Wireless introduced a new class of digital DAS platform to the industry, offering CPRI integration deployment across all licensed cellular and public safety bands with the largest range of power classes of any DAS vendor.

BTI Wireless's Headquarters is located in Cypress, California, USA with other regional offices located in Europe and Asia.



BTI WIRELESS® GLOBAL FOOTPRINTS

Industry 4.0, US



Smart Manufacturing

- Private 5G network
- 5G distributed gNodeB @CBRS Band
- Video services, surveillance, etc.,

Entertainment, UK



Live Broadcast

- 4K video
- 5G SA network
- Distributed gNodeB

Industry4.0, GER



Smart Manufacturing

- Private 5G network
- 5G distributed gNodeB @N78
- Autonomous trucks, surveillance, video service

Broadband Access, US



Affordable Internet

- 5G Integrated gNodeB @CBRS Band
- GEO redundancy design
- Cloud-based NMS

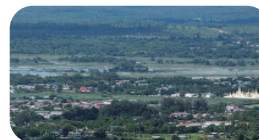
Smart Port, Brazil



Smart Transportation

- Wireless smart port
- Private 4G LTE Network
- Integrated eNodeB @B40 2300MHz

Rural Broadband, Myanmar



Rural Broadband

- 100 Mbps high-speed internet service
- 4G LTE fixed wireless access network
- Distributed eNodeB @B38 2600MHz

Smart Energy, GER



Offshore Windfarm

- Private 5G network
- 5G distributed gNodeB @N77
- High reliability
- 46dBm High Power with seamless coverage